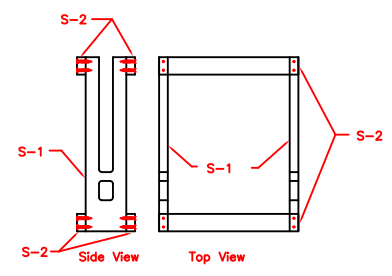
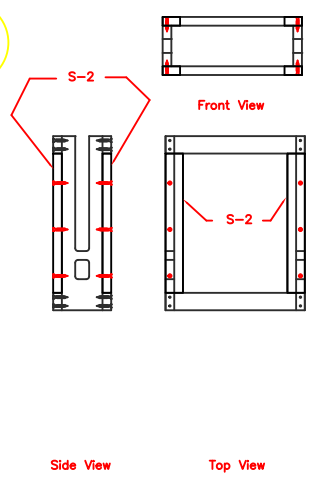


1



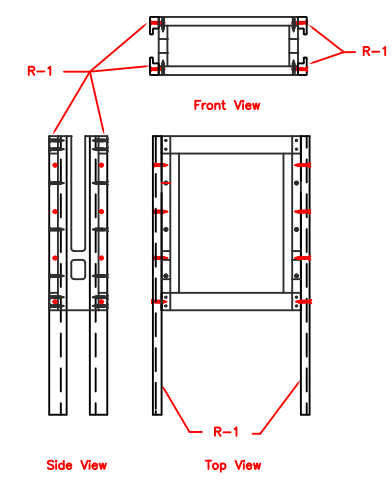
Step 1: After cutting all pieces to size as described on sheet M-2, Take the four parts denoted S-2 and drill a 1/8 pilot hole through the broad face of the part at 0.375 from the edge and ends of all 4 pieces. Use a 1-1/4 wood screw to attach the cross beams S-2 to the ends of the plane holder sleeves S-1 as drawn above. For greater strength, wood glue joints before fastening with screws for every joint in construction.

2



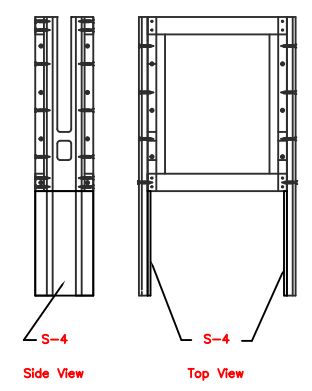
Step 2: Attach structural longitudinal beams (4) S-2. Use 1-1/4 wood screws in 1/8 pre drilled holes.

3



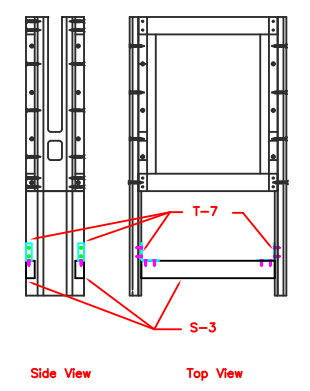
Step 3 Attach slider rails R-1 to structural cross beams S-2 and Longitudinal Beams S-1. Use 1-1/4 wood screws in 1/8 pre drilled holes.

4



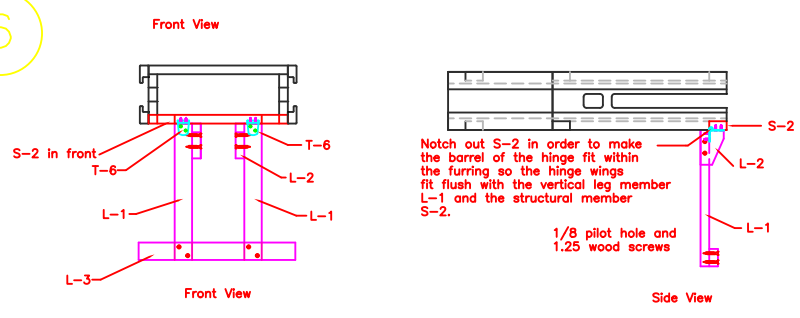
Step 4: Attach slider restrictor plate with finishing nails to rails R-1.

5



Step 5: Fasten both back cross beams S-3 to rail R-1 through slider restrictor plates S-4 using (4) 1.5 angle brackets T-7.

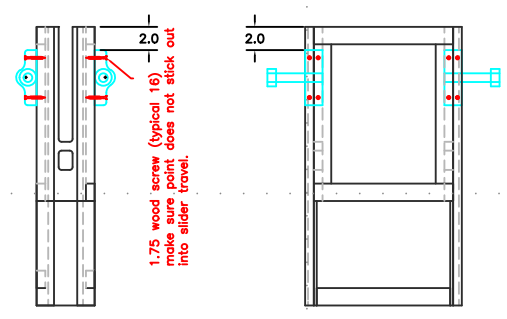
6



Step 6: When attaching the front legs one must make sure the vertical legs are close enough together to swing freely into the main structure so members L-1 fit flush with the longitudinal S-2 members and L-3 lays on the surface of the S-2 members. I would attach the vertical members L-1 to the hinge T-6 then attach the other half of hinge T-6 into the hollow carved into cross member S-2 for the hinge barrel. Attach member L-3 with the legs L-1 in the open position so L-3 is flush with the surface you are working on.

Front Leg Assembly

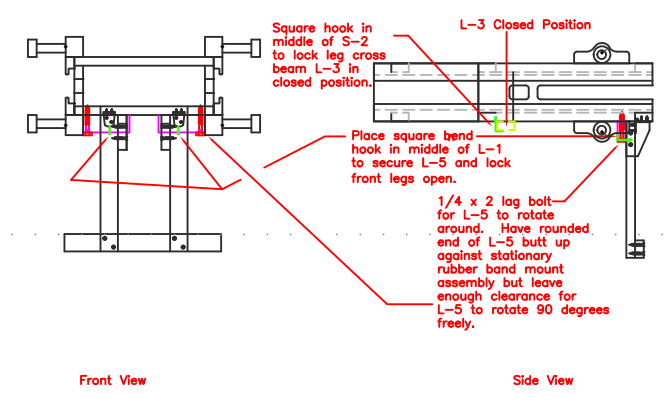
7



Secure with glue and screws for maximum strength.

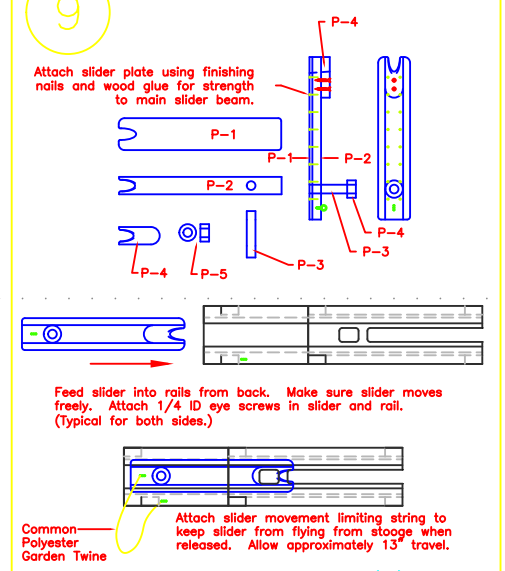
Stationary Sling Mount

8



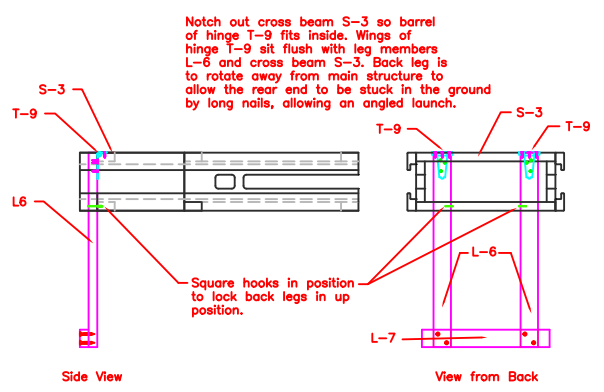
Front Leg Assembly Lock Mechanism

9



Slider Assembly (2)

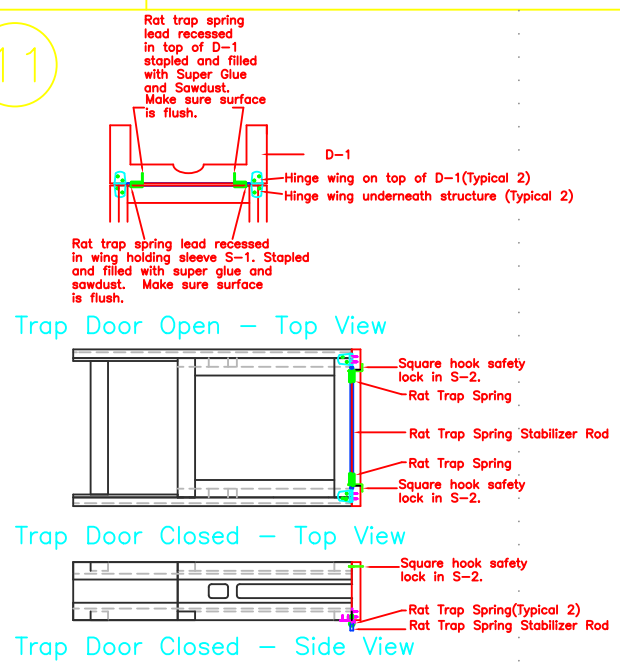
10



As in step 6 attach cross beam L-7 after attaching L-6 to hinge T-9 and placing Square Hooks in lower beam S-3.

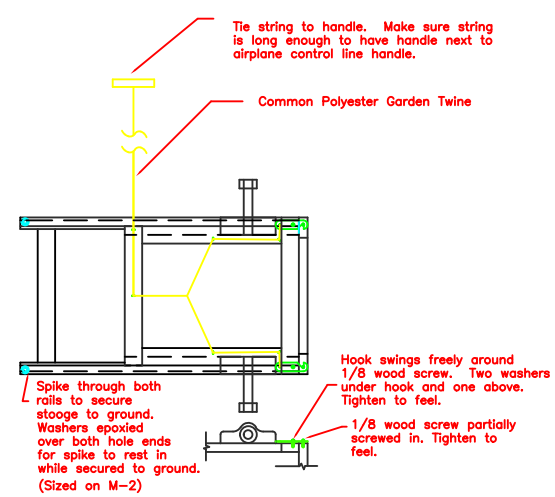
Back Leg Assembly

11



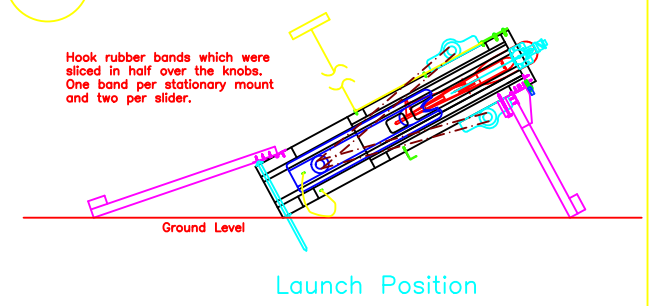
Trap Door Closed - Side View

12



Release Mechanism and Rigging

13



Launch Position

### SEIGE GUN STOUGE

#### Assembly Instructions

Design: Patrick Moreland

Date: April - July 1998

Drawn: Patrick Moreland

Date: July 5, 1998

Not To Scale

M-3